

Debbie Campbell

From: Planning Admin
Subject: FW: Planning ApplicationR/2023/0179/SCP
Attachments: CAT-PPI-PRC-019.pdf

From: CATS Pipeline <CATSpipeline@woodplc.com>
Sent: 13 March 2023 09:11
To: Planning Admin <PlanningAdmin.Admin@redcar-cleveland.gov.uk>
Cc: CATS Pipeline <CATSpipeline@woodplc.com>
Subject: RE: Planning ApplicationR/2023/0179/SCP

WARNING: This email came from outside of the organisation. Do not provide login or password details. Always be cautious opening links and attachments wherever the email appears to come from. If you have any doubts about this email, contact ICT.

Good Morning,

CATS objects to the planning application. Further consultation is required due to buried assets in the area.

Kind Regards,

Chris O'Connor on behalf of

Central Area Transmission System

<https://www.kellasmidstream.com/>



Members of UKOPA, Linewatch and LSBUD

<https://www.youtube.com/watch?v=itacNeMqEXU>

01642 546404



CATS Wayleaves Guidance for Landowners and Third Parties

Doc Number: CAT-PPI-PRC-019

C2	04/11/19	04/11/24	Reviewed and updated	KB	DH/GR	KB
C1	02/03/16	02/03/19	Issued for Approval	KB	GD	JB
REV	DATE	NEXT REVIEW	DESCRIPTION	BY	CHKD	APPVD

CONTENTS

1.0	INTRODUCTION	3
2.0	CONTACT DETAILS.....	4
3.0	RESPONSIBILITIES & ADVICE	5
4.0	NOTIFIABLE WORKS	6
5.0	TYPICAL QUESTIONS AND ANSWERS	6
6.0	EMERGENCY PROCEDURES	10

1.0 INTRODUCTION

The CATS Pipelines referred to below were constructed and are operated under the terms of the Pipelines Act 1962 and Pipeline Safety Regulations 1996. They are owned by CATS Parties and operated by Wood UK Ltd. The Pipelines are essential links in the transportation of Natural Gas, Butane, Propane and Natural Gas Liquids from the North Sea to the Terminal, National Grid and local customers. This booklet provides general guidance on working close to these pipelines and answers some of the questions commonly asked by landowners, tenants, contractors and others.

Please visit <https://www.kellasmidstream.com/cats/> for more information

The pipelines in this booklet are:

- **PL-774** 36" High pressure gas pipeline transporting offshore natural gas from the North Sea to Coatham Sands and 7.84 km onshore to Seal Sands via a Tees Tunnel.
- **PL-937** 6" Condensate export pipeline transporting condensate 2.87km from the CATS Terminal to SABIC North Tees plant.
- **PL-938** 6" Condensate export pipeline transporting condensate 2.45km from the CATS Terminal to the Navigator Terminals storage site.
- **CAT-Pipeline-04** 6" Propane pipeline transporting propane 1.09km from the CATS Terminal to Conoco Phillips storage site.
- **CAT-Pipeline-05** 6" Butane pipeline transporting butane 1.09km from the CATS Terminal to Conoco Phillips storage site.



Construction Images of the 36" pipeline routing through South Tees industrial sites



Construction Images of 6" exports in various locations in Seal Sands

2.0 CONTACT DETAILS

The day to day management of activities within the pipeline wayleave is implemented at the CATS Terminal. The pipeline wayleave being defined as the 3.5m to 7.5m wide strip of land either side of the CATS pipeline. The width varies depending on the landowner and location of the pipeline, for more information regarding the location of your work please contact CATS Terminal. It is a requirement by the pipeline operator that if you plan any works within 50m of the pipeline you must contact us to receive confirmation the pipeline will be unaffected by your work.

By using the free online LineSearchBeforeUDig enquiry process you will find out if your work location is within 50m of CATS pipelines. It's also important to note that this free service also notifies you of other assets nearby owned and operated by others.

It is important that any notifiable activities are brought to the CATS pipelines team attention to start the enquiry process. Upon receipt of your information the CATS terminal will provide you with Authorisation to Work.

LineSearchBeforeUdig: <https://www.linesearchbeforeudig.co.uk/>

Email address: **CATSpipeline@woodplc.com**

Switchboard telephone: **01642 546404**

CATS Terminal,
Seal Sands,
Middlesbrough
TS2 1UB



3.0 RESPONSIBILITIES & ADVICE

The Health and Safety Executive place responsibilities on both CATS Terminal and the landowners along CATS pipeline routes to ensure the continued safe operation of CATS underground pipelines.

The greatest threat to CATS pipelines is accidental damage resulting from 3rd party works and in this respect CATS Terminal takes reasonable and practical steps to reduce this risk. A number of risk reduction measures are in place including regular foot, road and aerial surveillance.

CATS Terminal also approves and directly supervises all works that may impact upon pipelines and request notification of any proposed works within 50m of a pipeline that could move within the pipeline wayleave.

It is the responsibility of landowners to advise CATS Terminal of any works proposed by contractors that could result in potential damage to the CATS pipelines.

It is the responsibility for all landowners, works sponsors, works managers, contractors and employees to make sure HSG47 is followed and that you have taken reasonable steps under the Health and Safety at Work act to keep people and underground pipelines safe. If you are not sure if the minimum searches or notifications have been completed before starting your work, then stop and ask.

It is always good practice to keep a pack of responses from those pipeline operators you have contacted at your work site, during your approved works. CATS always issue confirmation that you have been through our consultation process and can proceed with your works. Pipeline operators often challenge works in close proximity to pipelines and this information will be helpful to confirm you have received the required approvals.

4.0 NOTIFIABLE WORKS

Any activity that involves excavation, vehicular or service crossings, or landscaping or other work close to the pipeline that could affect pipeline integrity including ditching or fencing should be notified to CATS Terminal. Our wayleaves members will discuss the proposal with you in detail, and any conditions or restrictions needed to protect the pipeline will be advised.

No work should start near a CATS pipeline until a short consultation has taken place. CATS representative may request a site meeting to locate and peg out the route of the pipeline for your works.

This requirement includes emergency works and CATS Terminal understand that local contractors require immediate support for emergency works and will respond immediately when emergencies are declared.

If any works are required within the wayleave the CATS representative will refer to our additional restrictions and guidance documentation. This will often result in additional CATS mitigation such as supervision for your works, performing only hand digging, using load spreading mats etc.

Request a copy of Conditions and Restrictions for Work Activities in Close Proximity to CATS Pipelines document number: CAT-PPI-PRC-020 for more information.

IF IN DOUBT - PLEASE CALL 01642 546404



5.0 TYPICAL QUESTIONS AND ANSWERS

Q. What do CATS pipelines carry?

- The 36" CATS pipeline (PL-774) transports high pressure natural gas 411.84km (404km subsea, 7.84km onshore) from the CATS Riser Platform, located in the Central Graben Development of the North Sea, to processing facilities at the CATS Terminal in Teesside.
- Onshore 6" Condensate export pipeline (PL-937) transporting natural gas condensate 2.87km from the CATS Terminal to Sabic, North Tees plant.
- Onshore 6" Condensate export pipeline (PL-938) transporting natural gas condensate 2.45km from the CATS Terminal to the Navigator Terminals storage site.
- Onshore 6" Propane pipeline (CAT-Pipeline-04) transporting Propane 1.09km from the CATS Terminal to ConocoPhillips storage site.

- Onshore 6" Butane pipeline (CAT-Pipeline-05) transporting Butane 1.09km from the CATS Terminal to ConocoPhillips storage site.

Q. Why do we need to contact CATS terminal?

A. The HSE requires you to perform searches and understand what dangers there are when working near underground services. An example of the legislation you must follow is HSG47, this can be searched on the HSE website. Due to the complex nature of the CATS infrastructure and assets only the CATS pipeline engineers have the design information to advise you of what is acceptable before starting your proposed work.

Q. Why do CATS want to do this consultation process?

A. As a responsible operator CATS terminal has an obligation to safeguard people and the environment from any potential pipeline incident. Operators can't monitor the entire pipeline route 24 hours per day, so they mark the pipeline route and provide the public with free services to ensure they receive health and safety advice.

Q. What's a notifiable activity?

A. Anything that might change the ground conditions such as loading the ground with crane outriggers, crossing with vehicles, hand digging or machine digging, ditching, demolition, drainage fencing, dumping materials, landscaping, storage of temporary materials, equipment or people. If in doubt, just ask and we can provide more examples.

Q. How close do I need to be before I contact you?

A. CATS pipeline operators follow UKOPA guidance for a 50m notification distance between your proposed works to the Pipeline. Marker Posts are not always directly above the pipeline and we'll quickly tell you whether your type of work is close enough for us to require a detailed review. CATS terminal takes a very pragmatic view on distances and impact from work types.

Q. How do I contact you?

A. See section 2.0 Contact Details for various ways to contact us.

Q. I need to press on with my project, how long will this take?

A. CATS operator do not intend to unnecessarily delay your work, they only care about the safety of people and the safe operation of our pipeline. The operators initially respond within 24 hours and aim to close out all enquiries within 4 weeks but have often been able to close out much quicker than this. To avoid impact on your project schedule. We advise that early engagement is better, even if you don't have all the detail yet.

Q. Do I need to setup a legal agreement?

A. Depending on the nature of your works the CATS Pipeline owner may want to enter into a commercial agreement. We will inform the legal team of your intended works and we will receive confirmation whether they want to start a legal consultation and discuss liabilities. Third Parties progressing work without a required legal agreement resulting in damage or loss incurred by CATS operations will be pursued by CATS owners with unlimited liability.

Q. I'm just a small contractor, this minor job isn't worth pursuing if enquiries are expensive?

A. CATS pay for you to use LSBUD service for free. CATS do not charge for enquiries or site visits. There should be no cost involved for you to notify us of your proposed work. Only large construction projects that may require CATS terminal to complete engineering studies or provide additional resources may be back charged.

Q. Can't you just have one set of rules for the entire pipeline length?

A. Unfortunately certain areas are at more risk than others due to environmental conditions, changing in ground cover or recent development of land. It would be unfair to put restrictive conditions on areas of land where the pipeline is more protected. Therefore, we commit more review time at no cost to third parties to ensure we only request what we consider to be necessary for ensuring safety.

Q. How long have the pipelines been operational?

A. The 36" CATS pipeline operating safely and continuously since its installation in 1993. The export lines to SABIC, Conoco Phillips and Navigator Terminals have been operating safely and continuously since their installation in 1996.

Q. How do I know where a pipeline is located across my land?

A. All pipelines are clearly identified at crossings (road, rail and river) by markers and with aerial markers. However, do not assume that the pipeline is routed in a direct line between the markers. If you wish to start an activity, then please contact CATS Terminal so we can show you where the pipeline is.

Q. How deep are the pipelines?

A. The landlines were installed with a varied amount of cover and this has been recorded in technical documentation. However, in some locations, the cover may have been reduced by factors such as soil erosion, and it is therefore not always safe to assume that the full cover is present. In reclaimed land of an industrial nature, especially Teesside, the cover is often significantly less than anticipated and in parts may only be less than 1m. Please note, if you have completed trial digs down to normal service depths, the CATS pipelines may be below this point and without confirming with CATS terminal you could strike a pipeline.

Q. How can CATS Terminal help?

A. If you are planning an activity, we can help at the earliest stages in defining any restrictions or conditions that might be needed to protect the pipeline. Then when you are about to start a job, we

can accurately mark the position of the pipeline and supervise any operations close to it to ensure these are performed safely.

Q. Who will issue permission to proceed with my work?

A. The CATS Terminal Operations Team control all Authorisation to Work forms and on the day your works start you will have a set of instruction to request your permission. There will also be instructions on how to close out your job, as we need to know when you have finished. These instructions are explained during the enquiry process.

Q. Why do I need to report any damage to CATS Terminal?

A. Any physical damage to the pipeline may result in a major incident. It must be inspected to check whether a repair is required or to reinstate the corrosion protection coating system. Please note accidental damage is a serious incident and must be reported, see section 6.0 for more information.

Q. Are maps and pipeline route details available?

A. Yes, the route of CATS pipelines can be provided on various scale Ordnance Survey maps in paper or digital form from our Geographical Information System. However, it's possible for third parties to incorrectly interpret these so we request you first confirm your work location with an Easting and Northern number set, and we can make a bespoke map for your work that includes our pipelines and wayleave location. There are free online services for getting your work site location data such as: <https://gridreferencefinder.com/>

Q. Why are you issuing this booklet?

A. The Pipelines Safety Regulations 1996 place a duty on pipeline operators to supply information on the existence and whereabouts of their pipelines. We are always looking for new ways to raise awareness of the pipelines.

Q. I'd like more information, are you able to help?

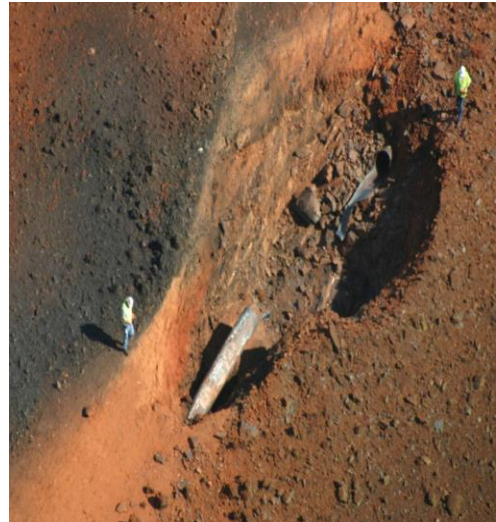
A. The CATS terminal has developed an annual awareness campaign and this ranges from one-to-one meetings with landowners, asset owners, neighbours and local planning authorities. We provide awareness presentations and can arrange one for you or your contractors free of charge. Just contact us in the same way you would raise a works enquiry.

Please remember, although you may not have work planned yet; we can send you copies of this document to hand out to your colleagues to raise awareness, helping you avoid any delays.

6.0 EMERGENCY PROCEDURES

1. Shut down any machinery and other sources of ignition.
2. Evacuate all personnel from the vicinity immediately.
3. Keep moving upwind of the incident.
4. Notify immediately - **The Police 999**

CATS Terminal 01642 546404



Please note: Shut down all working plant and machinery in the vicinity of a pipeline strike (within 350 meters) of the incident and ensure there are no other potential sources of ignition in the vicinity.

Prevent the approach of traffic or any other unauthorised persons.

Wait for a representative from CATS or the Police to arrive on site and ensure that assistance is given as required safeguarding People, the Environment and Property.

N.B. IN THE EVENT OF A CATS PIPELINE LEAK OCCURRING OBSERVE THE ABOVE PRECAUTIONS BUT DO NOT ATTEMPT TO STOP THE LEAK



36" Gas Pipeline Explosion, North Texas June 7, 2010